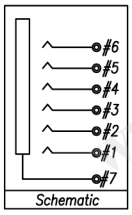
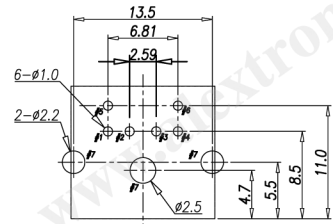
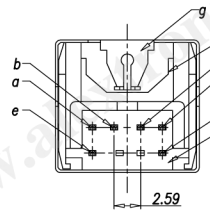
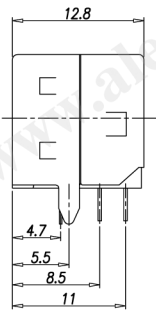
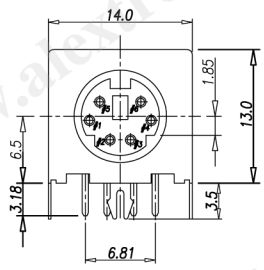


CATEGORY	DESCRIPTION	P/N #
CONNECTOR	MINIDIN 6PIN, R/A, T/H, With Shielding	MD306R-11170-XX60

PART NO.:  
MD306R-11170-XX60

REV.	ECN NO	DESCRIPTION	REVISED	DATE
R01		NEW RELEASE	JXM	2009.05.08

Color Scheme



Recommend PCB Layout  
Jack Top View  
Tolerance: ±0.05mm  
Recommend PCB Thickness 1.6mm

MINIDIN SPECIFICATION:

- Voltage and Current Rating: DC12V & 1.0A
- Contact resistance
  - Initial, before life cycle test:
    - Pin to Contact: 30mΩ Max.
    - Plug Shield to Contactor: 50mΩ Max.
  - After life cycle test:
    - Pin to Contact: 60mΩ Max.
    - Plug Shield to Contactor: 100mΩ Max.
- Insulation resistance between any adjacent open contacts: 50MΩ @ DC250V Min.
- Dielectric Strength: A potential of AC250V RMS, 50/60Hz shall be applied, between any open contacts for one minute without broken.
- Insertion force: 4.5Kgf Max.
- Withdraw force: 0.3Kgf Min.
- Single Contact Maintenance Force: 20gf Min. between each contact and matching pin (0.57~0.60 Dia.)
- Life Cycle Test: Shall be subject to 1,500 cycles at 10~20 cycles per minute with no electrical load.

Color Scheme

XX	Housing
00	Black
05	Green
07	Purple

i	Housing	1	PBT UL94V-0	See Color Scheme	
h	Cover Board	1	PBT UL94V-0	Black	
q	Terminal#7	1	SPCC, T=0.25mm		
f	Terminal#6	1	Phosphor Bronze, T=0.2mm	Gold Flash Plating	
e	Terminal#5	1	Phosphor Bronze, T=0.2mm	Gold Flash Plating	
d	Terminal#4	1	Phosphor Bronze, T=0.2mm	Gold Flash Plating	
c	Terminal#3	1	Phosphor Bronze, T=0.2mm	Gold Flash Plating	
b	Terminal#2	1	Phosphor Bronze, T=0.2mm	Gold Flash Plating	
a	Terminal#1	1	Phosphor Bronze, T=0.2mm	Gold Flash Plating	
NO.	PART NAME	Q'TY	MATERIAL	PLATING & COLOR	Remark

UNLESS OTHERWISE SPECIFIED TOLERANCES

DECIMALS:	ANGLES:
X : ±0.5	X : ±2'
X.X : ±0.3	X.X : ±1'
X.XX : ±0.2	

Product Drawing			
ALEXTRONIC			
SCALE: free	UNIT: mm	DWG. NO:	
SIZE: A3	PAGE: 1 OF 1	REV: R01	
APPROVED BY	CHECKED BY	PREPARED BY	
WYX	Pengjie	JXM	
CUSTOMER COPY			